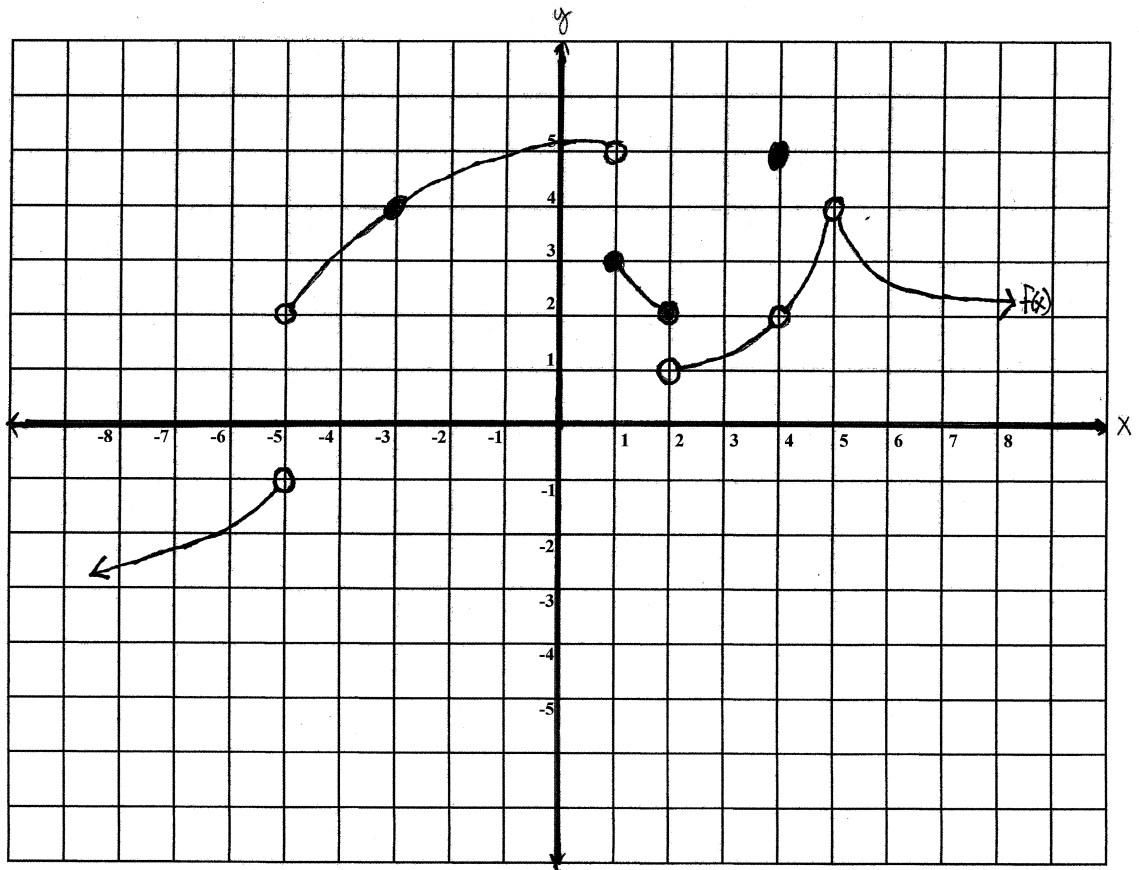


A graph of a piecewise function,  $f(x)$  is given below. All indicated points have integer coordinates. Use what you have learned about functions and limits to evaluate each limit or functional value.



a)  $\lim_{x \rightarrow 4^-} f(x) =$

b)  $f(4) =$

c)  $\lim_{x \rightarrow 1^+} f(x) =$

d)  $\lim_{x \rightarrow 1^-} f(x) =$

e)  $\lim_{x \rightarrow 1} f(x) =$

f)  $f(1) =$

g)  $\lim_{x \rightarrow -5} f(x) =$

h)  $\lim_{x \rightarrow 5} f(x) =$

i)  $f(5) =$