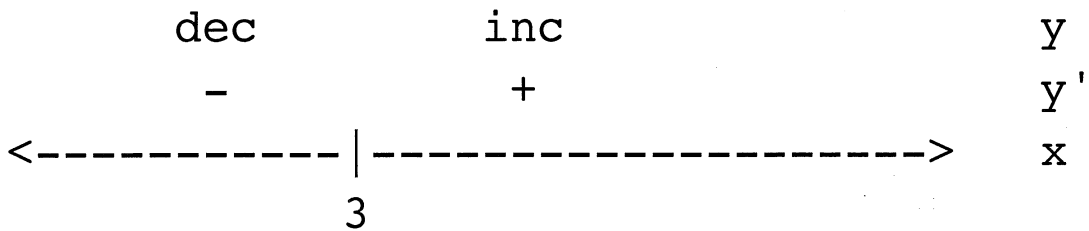


Increasing and Decreasing Function Examples

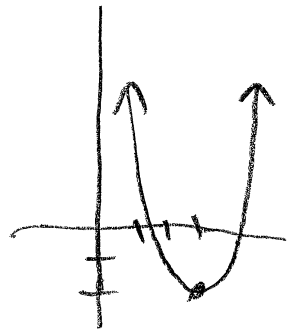
For each example, draw a graph that reflects the information given by the sign graph:

Example 1:

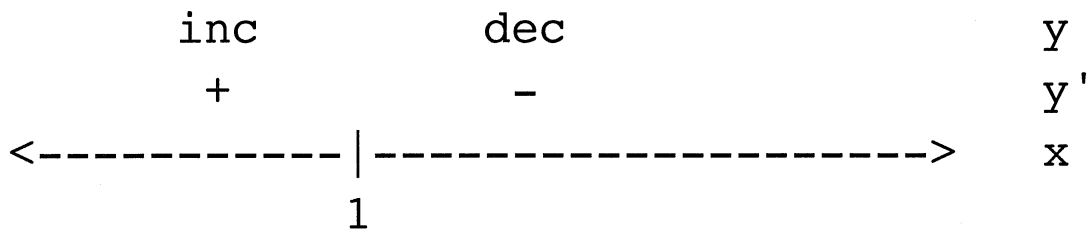


(3, -2)

pt on crv

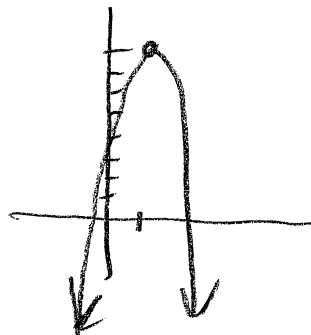


Example 2:

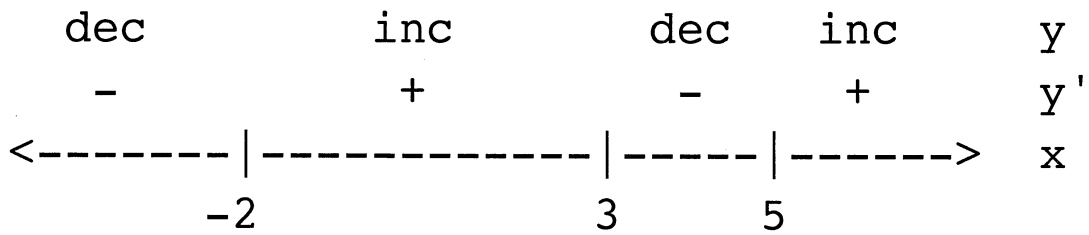


(1, 8)

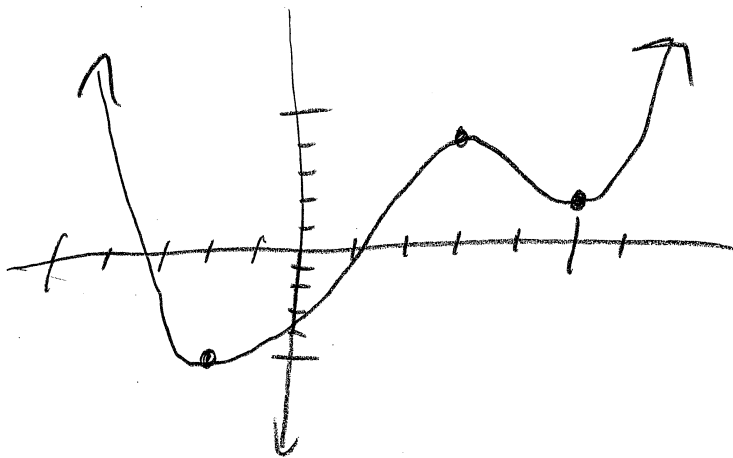
pt on crv



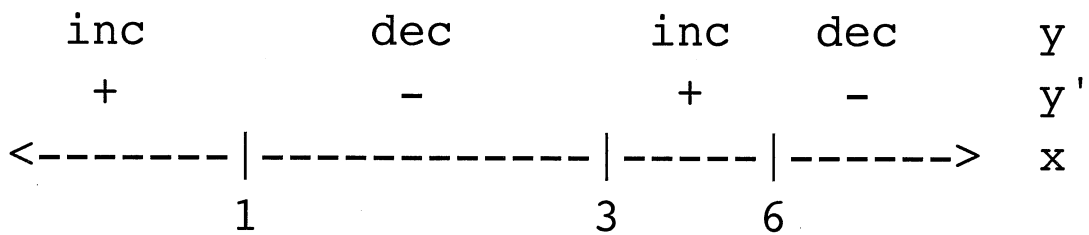
Example 3:



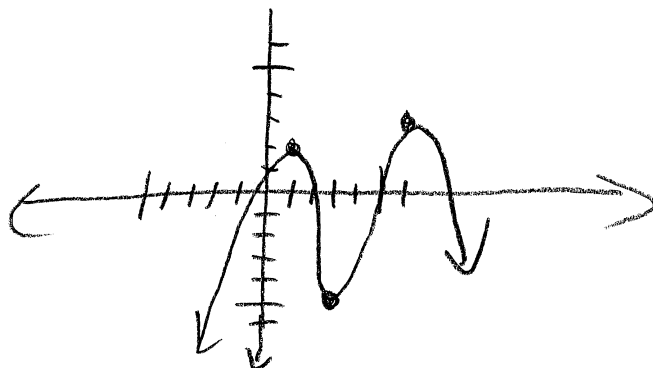
$(-2, -5)$
 $(3, 4)$
 $(5, 2)$
pt on crv



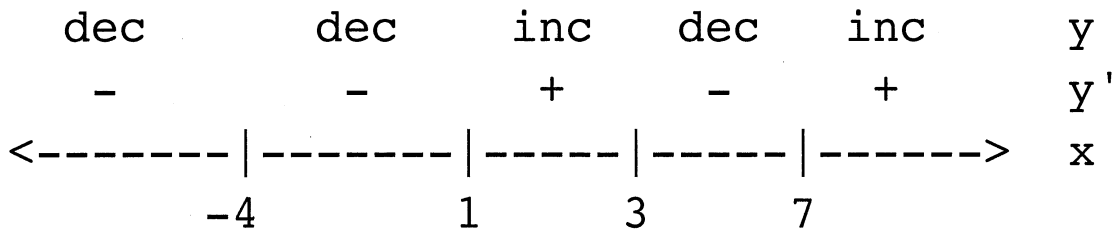
Example 4:



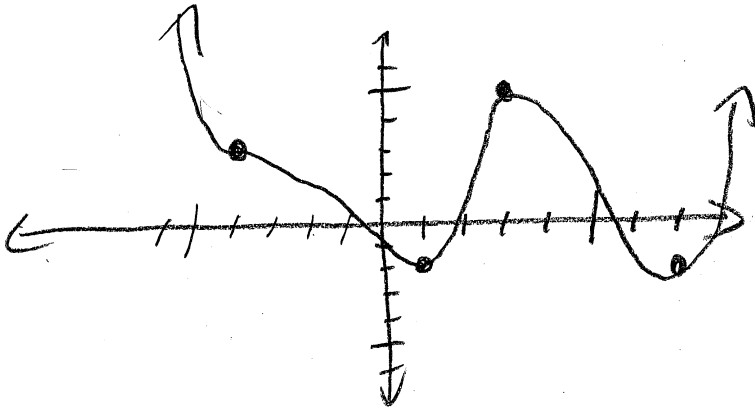
$(1, 2)$
 $(3, -5)$
 $(6, 3)$
pt on crv



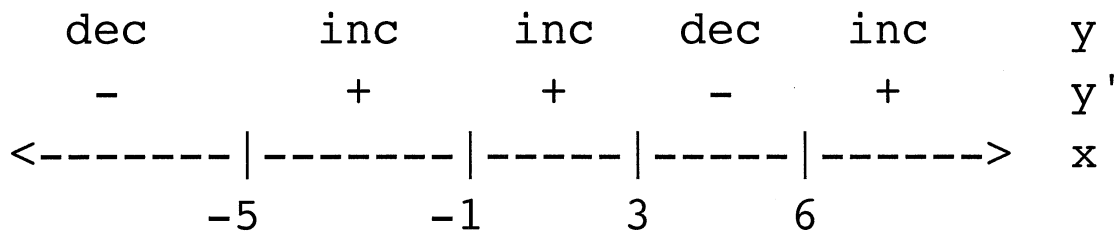
Example 5:



$(-4, 3)$ $(1, -2)$ $(3, 5)$ $(7, -2)$ *pt on crv*



Example 6:



$(-5, 3)$ $(-1, 7)$ $(3, 9)$ $(6, 1)$ *pt on crv*

